

deluxe™

WELCOME TO 2012

DELUXEBMX.COM



BAR END BAR EXTENDERS

If you want the cleanest pair of Bar Ends in the business and make your bars just over one inch wider, then the Deluxe Bar End Extenders are here for you. These unique Bar Ends are CNC machined from 6061-T6 aluminium with a hidden grub screw that firmly fixes these to your bars.

Size Fits your bars
Colours Black, Red, Blue, Silver, Ti Grey
Designers Davros and Sylvain Taro



F-LITE STEM

We all wanted a quality top-loader stem to match our other F-Lite parts, and this is it. Awesome CNC machined quality of course, with a finish to match and perfect profile. Not superlight, but definitely built to last, and in two sizes.

Size 48mm 54mm
Weight 275g / 9.7oz 295g / 10.4oz
Colours Black, Silver, Ti Grey



SUPERLIGHT SEAT & POST COMBO

Our seats are built simple, and tough. The upper is Kevlar for durability, and it's well padded for proper comfort. The aluminium post firmly locks into the unique Polypropylene seat base at just the right angle, and the padded nose won't bruise your thighs when you go down in a tangle of legs and chrome. A Superlight combo, just right.

Post 150mm / 6", aluminium
Seat Polypropylene seat base Kevlar padded upper, embossed logo
Weight 210g / 7.5oz

SACRE BLEU FRAME

Max Bimar started with a clean sheet for his 2012 signature frame, and the end result is this, the Sacre Bleu model. It features sharper headtube and seattube angles, slightly taller BB height, and proportionally correct rear end lengths. Combine this with proven build-quality from our Deluxe frame fabricator, and you have one of the best frames out there - removable brake hardware, capped stays, curved stay bridges, tapered chain and seat stays, Mid BB, butted tubing, and more. This frame is built to take it.

| Sacre Bleu Model | L Frame | XL Frame | XXL Frame |
|-------------------------|---------------|--------------|---------------|
| Tuptube Length | 20.75" | 21.1" | 21.5" |
| Chainstay Length | 13.75" | 14.1" | 14.1" |
| Headtube Angle | 74.5° | 74.5° | 74.5° |
| Seattube Angle | 72° | 72° | 72° |
| BB Height | 11.6" | 11.6" | 11.8" |
| Weight | 2.1kg / 4.6lb | 2.2kg / 4.85 | 2.3kg / 4.9lb |

Build Japanese seamless 4130 chromoly tubing, double butted downtube, double butted toptube, butted seattube, tapered seatstays, tapered chainstays, 4mm thick dropouts, curved stay bridges, downtube gusset, removable brake cable guides and brake lugs, seatstay mounted brakes, heat-treated headtube, BB shell, and dropouts

Colours Clearcoat, Show Chrome Plate, Black

PA MODEL FRAME

When Mark Potoczny came to design his new 2012 signature frame he started with our proven 2011 Tech2 and added his own design details, all while keeping the same balanced and solid geometry: built for bicycle motocross and anything you can throw at it. Mark added an oval downtube, double-butted tubing, built-in seatclamp, seat-stay mounted brake lugs, Mid BB, curved stay bridges, simple downtube gusset, all with bullet-proof build quality. Mark claims that it's the best bike he's ever ridden, and that's saying something. If you want the same bike as ridden by one of the best all-round riders in the business, look no further.

| PA Model | L Frame | XL Frame | XXL Frame |
|-------------------------|----------------|---------------|----------------|
| Tuptube Length | 20.75" | 21" | 21.5" |
| Chainstay Length | 13.75" | 13.8" | 14.1" |
| Headtube Angle | 74° | 74° | 74° |
| Seattube Angle | 71° | 71° | 71° |
| BB Height | 11.5" | 11.5" | 11.5" |
| Weight | 2.08kg / 4.6lb | 2.1kg / 4.6lb | 2.2kg / 4.85lb |

Build Japanese seamless 4130 chromoly tubing, double butted oval downtube, double butted toptube, butted seattube, downtube gusset, curved stay bridges, 4mm thick laser-cut dropouts, seatstay mounted u-brake lugs, heat-treated headtube, BB shell, and dropouts, Midsize BB, built-in seatclamp

Colours Clearcoat, Show Chrome Plate, Olive



HANDLEBARS

We now have four sizes of Deluxe bars, all based around the exacting build quality and comfortable sweep and bend that made our first bars an instant hit. Just try them - no crazy trendy sizes, just perfect bicycle motocross bars.

| Model | L Bars | XL Bars | XXL Bars | 3XL Bars |
|---------------|----------------|----------------|-----------------|----------------|
| Width | 26.5" | 27.25" | 28" | 28.5" |
| Height | 7.75" | 8" | 8.25" | 8.5" |
| Weight | 0.72kg / 1.5lb | 0.73kg / 1.6lb | 0.74kg / 1.65lb | 0.76kg / 1.7lb |

Sweeps 12" back and 1" up
Build 9-butted, fully heat-treated chromoly



SUPERLIGHT SEATCLAMP

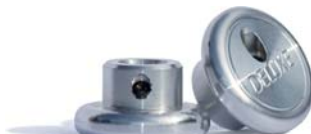
CNC Machined from 6061-T6 aluminium, chromoly bolt, and superlight; in three colours.

Colours Black, Polished, Ti Grey
Designer Sylvain Taro
Weight < gnat's fart

BAR END BAR ENDS

Made not only because we can name them after a trails spot: CNC machined aluminium, a proper bar end that doesn't clog up with dirt, light, durable, all you need.

Size Fits your bars
Colours Black, Silver, Ti Grey
Designers Davros and Sylvain Taro



F-LITE PEDALS

Short of ripping off a Shimano DX, what more can be done for pedals? Our new F-Lite pedals are made for us by the best pedal makers in the business, Weligo. Light, with a secure foot-heel, and built in the perfect size.

Body CNC Machined Aluminium, Replaceable Pins
Internals Chromoly axle, FAF sealed bearings
Colours Black, Silver, Ti Grey
Weight 240g / 8.4oz each



F-LITE HUBS

Fully tested by our riders, our Deluxe F-Lite hubs are proven. They feature 10mm female axles front and rear (with adapters for rear 14mm dropouts), fully sealed FAF cartridge bearings, durable pawls on a one-piece cromoly driver, CNC machined hub-shells and hardware, chromoly studs, and super-smooth appearance.

Body CNC aluminium, 36 spoke, low-flange
Bearings Sealed bearing, FAF, front and rear
Driver 9T RHD one-piece driver
Weights Front 180g / 6.4oz, Rear 360g / 12.7oz
Colours Black, Silver, Ti Grey
Note Deluxe recommends 28-9 gearing for riding faster



F-LITE SPROCKET

We wanted something simple and effective. None of us are going to be sprocket-grinding concrete hubbas at every available opportunity, so we don't need anything thick or tough as a bag of old nails (or as heavy). We have the four most popular sizes and five colours with CNC logos and a classic profile.

| Teeth | 25 | 28 | 30 |
|---------------|-------------|-------------|-------------|
| Weight | 60g / 2.1oz | 80g / 2.8oz | 90g / 3.2oz |

Colours Black, Red, Blue, Polished, Ti Grey



POMPOM SPROCKET

Pompom isn't just a badass on a bike - he's also a fully qualified CNC machinist and has custom-made a few parts, such as pedals and sprockets: and he came up with this design, which we thought was so good we'd put it into production. We've tested these for months, and they are dialled and out now. CNC machined from highgrade 7075-T6 aluminium.

| Teeth | 25 | 28 | 30 |
|---------------|-------------|-------------|-------------|
| Weight | 60g / 2.1oz | 80g / 2.8oz | 90g / 3.2oz |

Colours Black, Polished, Ti Grey



SHOVELHAND GRIPS

Manufactured using high quality recycled rubber and with a unique grip pattern that wears in really well. They come in one size: Mansize.

Length 150mm
Diameter 30mm
Colours Black, Red, Purple, Blue, Green, Brown with black end-plugs





BICYCLE
MOTOCROSS
BY
deluxe[™]

DELUXEBMX.COM

JEREMY BALL
360 TABLE IN FRANCE



PHOTO: ALEBODO